

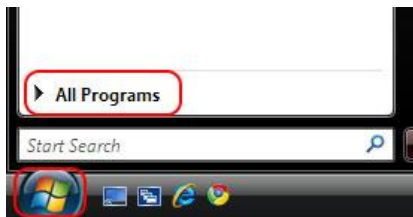
RDC for Microsoft Windows 7

This instruction assumes the following:

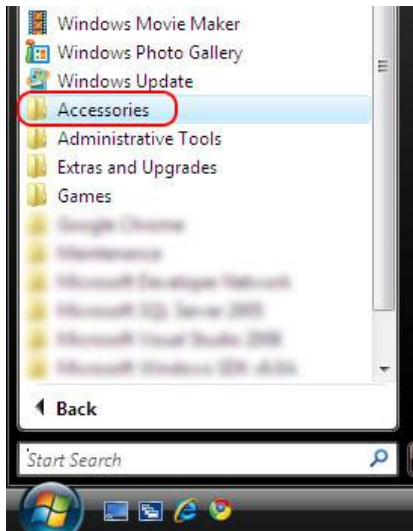
- The Gallaudet-owned computer has been configured to allow incoming Remote Desktop Connection (RDC) by an Administrator
- You have successfully made a VPN connection from off campus. For instructions to make a VPN connection, return to the VPN page: <http://www.gallaudet.edu/gallaudet-technology-services/services/virtual-private-network>
- You know your computer IP Address. This IP Address should begin with 134.231
- If you are having issues with any of the above then please contact the [Help Desk](#) for assistance.

Instructions

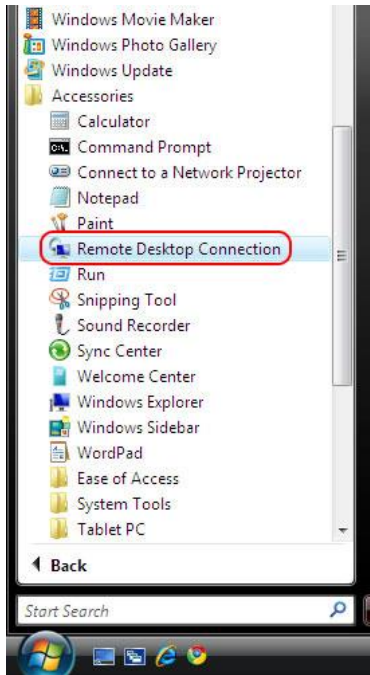
1. Click on **Start**. Select **All Programs**.



2. Click on **Accessories**.



3. Click on **Remote Desktop Connection**.



4. Enter your computer IP Address with a port number (*i.e. 134.231.1.1:800*). The default port number for Gallaudet is 800. Click on **Connect**.



5. There are two different login types depending on your remote computer:

- A. In the User name field, type your username. In the Password field, type your password. The user name and password should be based on your Bison account. Be sure to select **GALLAUDET**. Click on **OK**.



- B. In the User name field, type **GALLAUDET** then your username. In the Password field, type your password. The user name and password should be based on your Bison account. Click on **OK**.

