

SSL VPN for Microsoft Windows

To install SSL VPN, you need to have an administrator install the software on your computer. If you do not have administrative rights to your computer, please submit a helpdesk ticket via the [Help Desk](#).

1. Open Microsoft Internet Explorer. (**NOTE:** Other browsers such as Firefox or Chrome will not work)
2. Navigate to <http://remote.gallaudet.edu>
3. Log in using your Gallaudet username and password and then click on **Sign In**



The screenshot shows the login page for Gallaudet University's SSL VPN. At the top, there is a blue banner with the text "Gallaudet University". Below the banner, it says "Welcome to the Gallaudet University SSL VPN". There are two input fields: "Username" with the text "john.doe" and "Password" with a masked password of seven dots. To the right of the input fields, there is a note: "You must use Internet Explorer (Windows) or Safari (Apple) Web browser Gallaudet SSL VPN." Below the input fields are two buttons: "Sign In" and "Help". To the right of the "Sign In" button, there is another note: "Please log in using your Gallaudet username and password. If you have forgotten your password then please visit <http://passwords.gallaudet.edu>".

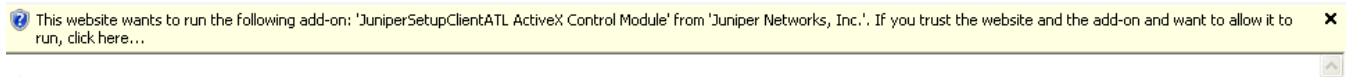
4. If you see a Java warning, click on **Run**



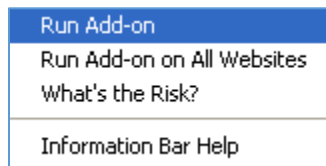
5. If you see a Host Checker warning, click on **Always**



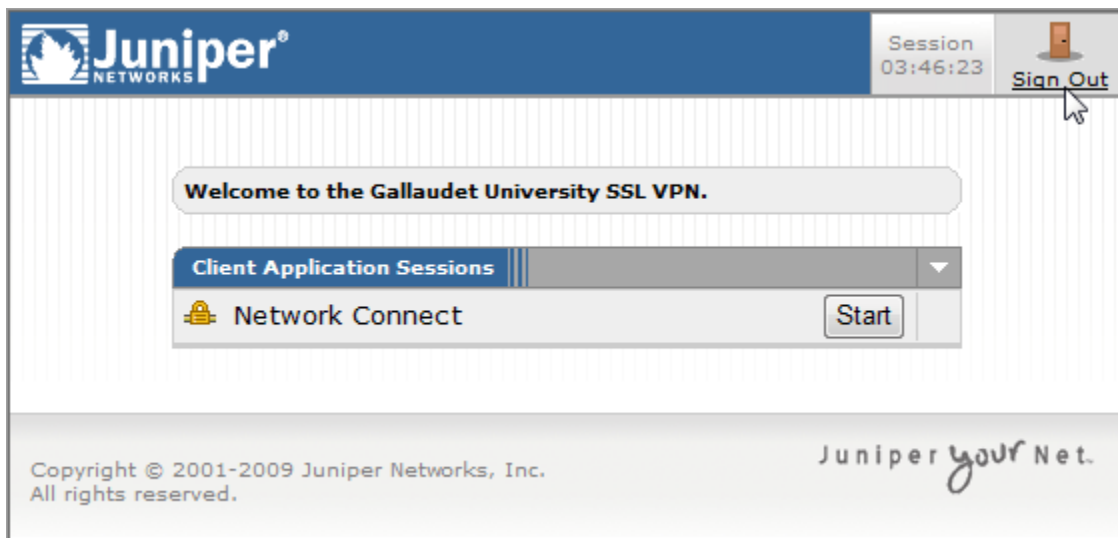
6. You may need to click on top of your browser menu bar to install an application.



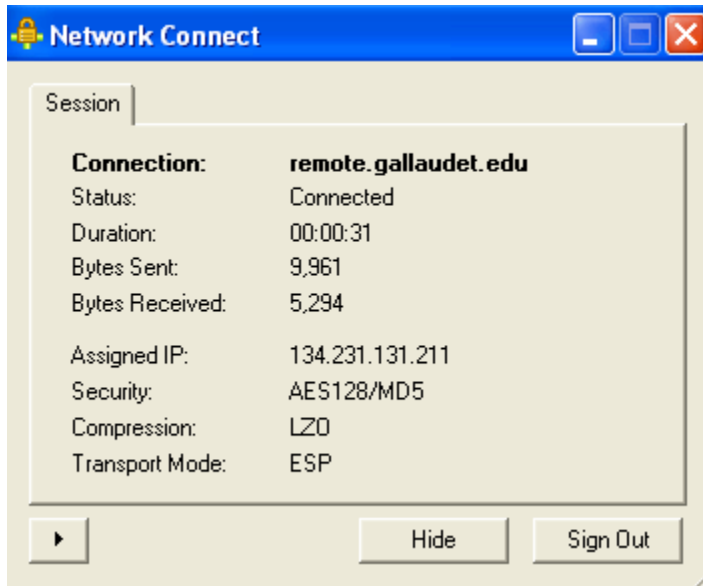
7. Select **Run Add On** in order to run the ActiveX Applet





8. Click on **Start** to begin your VPN connection

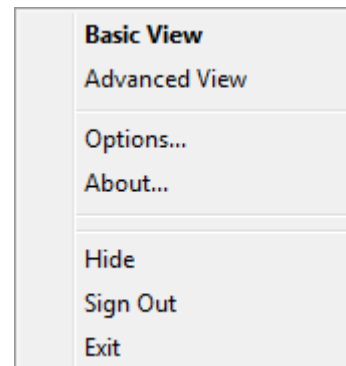


9. You may see a Network Connect window with your IP address and connection information.



If you do not see the above window, please right click on the following icons  or  in your system tray (Bottom right) and select **Basic View**. If you see the Assigned IP field starts with 134.231 then this means that you have successfully connected to Gallaudet through SSL VPN. You can click on **Hide** to close the window.

10. Assuming that you have successfully connected to the Gallaudet network, you should be able to remote desktop into your PC at this point. For further instructions on how to connect to your computer, please follow the Remote Desktop Connection instructions on the VPN page: <http://www.gallaudet.edu/gallaudet-technology-services/services/virtual-private-network>.



11. When you are finished with your network connection with Gallaudet, click on **Sign Out** in the above window. You should then see a new window confirming that you have logged off the Gallaudet system.

Gallaudet University

Welcome to the

Gallaudet University SSL VPN

Your session has ended.