

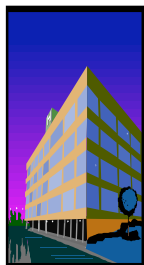


**Appendix D**  
**Schedule: What Do You Do During Travel Training?**

## What Do You Do During Travel Training?

### Travel Training

What is the purpose of travel training?



The Transit Office

What do you do before, during & after travel training?



### Schedule of A.M. Training

7:00 a.m.--8:30 a.m.

Training starts in the morning so you arrive on time for your first class.



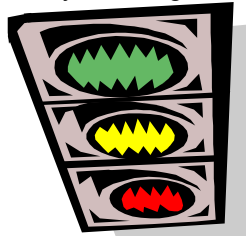
School staff meets you at home or wherever your training begins.

### Schedule of P.M. Training

3:00 p.m.--6:00 p.m.

### Road Signs and Safety

Why should you obey traffic lights?



What is a stop sign?



Learn how to keep yourself safe while traveling independently.

### Types of Transportation

What is the subway or train system?



Subway or Train System

### The metro Bus

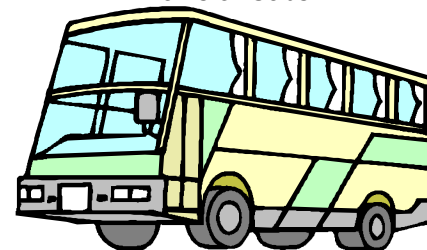


When do you use the bus?

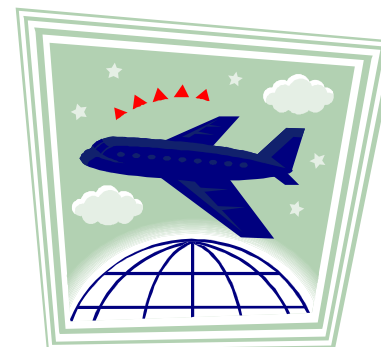
### Other Transportation Systems



Taxis or Cabs



Shuttle Buses, Greyhound



Airplanes and Airports

Who benefits when YOU learn to travel independently and safely?



**ANSWER:**  
Principal Teachers  
Transition Staff  
Counselors  
Parents  
Guardians  
Dorm Staff  
Bus Drivers  
The Community  
And YOU!