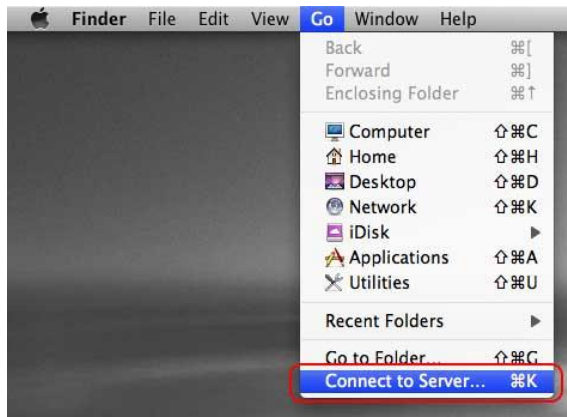


Connecting to a Network Access Storage Apple Mac OS X Leopard

1. In Finder, click on **Go**, then click on **Connect to Server**.



2. Type your server name (*always starts with smb://; i.e. smb://nas/home/john.doe*) into the **Server Address** field box. Click on **Connect**.



3. A Finder window will open automatically on your Desktop if you are already authenticated. If it does not, the File System Authentication window will appear. Make sure **Registered User** is selected. In the Name field, type your username. In the Password field, type your password. The user name and password should be based on your Bison account. Click on **Connect**.



Note: be sure to eject your Network Drive connection after you are done.