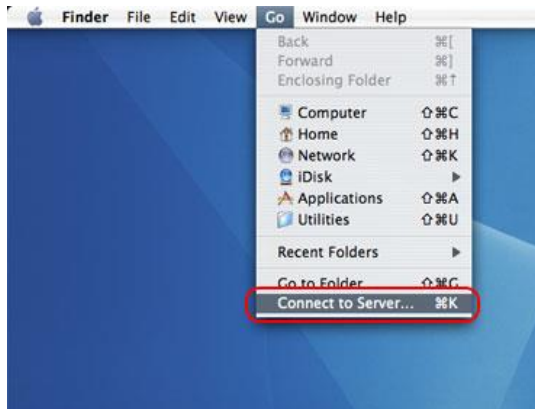
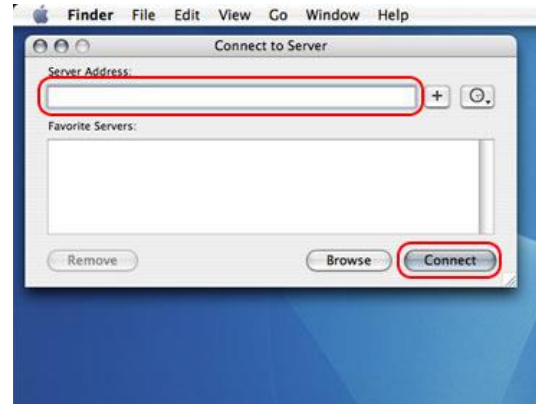


Connecting to a Network Access Storage Apple Mac OS X Tiger

1. In Finder, click on **Go**, then click on **Connect to Server**.



2. Type your server name (*always starts with smb://; i.e. smb://nas/home/john.doe*) into the **Server Address** field box. Click on **Connect**.



3. A Finder window will open automatically on your Desktop if you are already authenticated. If it does not, the SMB/CFIS File System Authentication window will appear. Type **GALLAUDET** in Workgroup or Domain field. In the Name field, type your username. In the Password field, type your password. The user name and password should be based on your Bison account. Click on **OK**.



Note: be sure to eject your Network Drive connection after you are done.