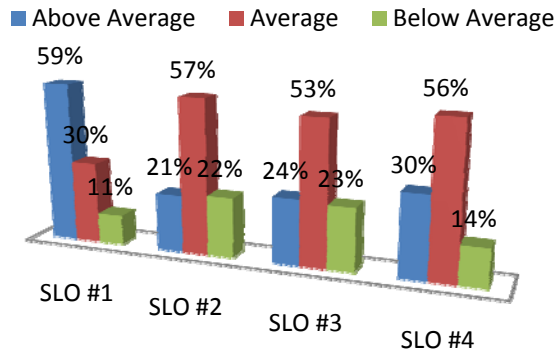


Examples Data Summaries

Assessment Data Summary



SLO	Above Average	Average	Below Average
#1	59%	30%	11%
#2	21%	57%	22%
#3	24%	53%	23%
#4	30%	56%	14%

- #1 Express why psychology is a science
- #2 Apply psychological theory to a real life event
- #3 Explain one aspect of human behavior using multiple psychological theories
- #4 Design a research experiment

Above Average = understanding of material with few errors	Average: shows understanding, but lacks detail	Below Average: clearly did not understand the material
------------------------------------------------------------------	-------------------------------------------------------	---------------------------------------------------------------

Portion of Rubric used to assess student portfolio in Journalism*

The student...		Outstan. + Good + Min. Ad	Outstanding	Good	Minimally Adequate	Inadequate	No Evidence
Ones with "No Evidence" Factored Out							
1	Understands and applies the principles and laws of freedom of speech and press	98%	40%	56%	2%	0%	2%
2	Understands the history and role of professionals and institutions in shaping communications	97%	32%	45%	20%	3%	0%
3	Understands the diversity of groups in global society in relationship to communications	45%	40%	5%	0%	0%	55%
4	Etc.						

*(Adapted from: Suskie, L. (December, 2008). Understanding and Using Assessment Results. Paper presented at 2008 Middle States Commission on Higher Education Annual Conference.

DISCLAIMER: This is a fictitious document. This data does not, in any way, represent any of the programs at Gallaudet University. It is intended only as a guide for summarizing data.

Thematic Analysis of Qualitative Data Evaluation

35 students participated in the internship program. The second question asked about further support needed:

How can program better prepare you to function as an entry-level professional?

- More samples/examples needed to be shown (13)
- “Better access to all internship related information (4)
 - How/to whom data will be reported? (2)
 - Site location? (1)
 - Upcoming deadlines need to be more clear (1)
- Ways to collaborate better with co-workers (5)

Additional Information: see website for [Tips to Summarize Data](#)

DISCLAIMER: This is a fictitious document. This data does not, in any way, represent any of the programs at Gallaudet University. It is intended only as a guide for summarizing data.

Adapted from sources below:

Hopkins, W. G. (2001). *Summarizing Data: Simple Statistics & Effect Statistics*. Retrieved July 2, 2009, from <http://www.sportsci.org/resource/stats/summarize.html>

Raw Data. (n.d.). In *Wikipedia, the free encyclopedia*. Retrieved July 2, 2009, from http://en.wikipedia.org/wiki/Raw_data

Rosenberg, D. (1998). Module 4: Methods for Summarizing Data. In Rosenberg, D., Monahan, C., & Handler, A., *Analytic Methods in Maternal and Child Health*. Retrieved July 2, 2009, from <http://www.uic.edu/sph/dataskills/publications/wrkbkpdfs/chap4.pdf>

Suskie, L. (2004). *Assessing Student Learning: A Common Sense Guide*. San Francisco, CA: Jossey-Bass.

Suskie, L. (December, 2008). *Understanding and Using Assessment Results*. Paper presented at 2008 Middle States Commission on Higher Education Annual Conference.

DISCLAIMER: This is a fictitious document. This data does not, in any way, represent any of the programs at Gallaudet University. It is intended only as a guide for summarizing data.